

# Streaming Video operation Quick Guide

1. PC viewer file: SmartEye Client

Download the whole folder files from the link below and install it to your PC by running the setup.exe

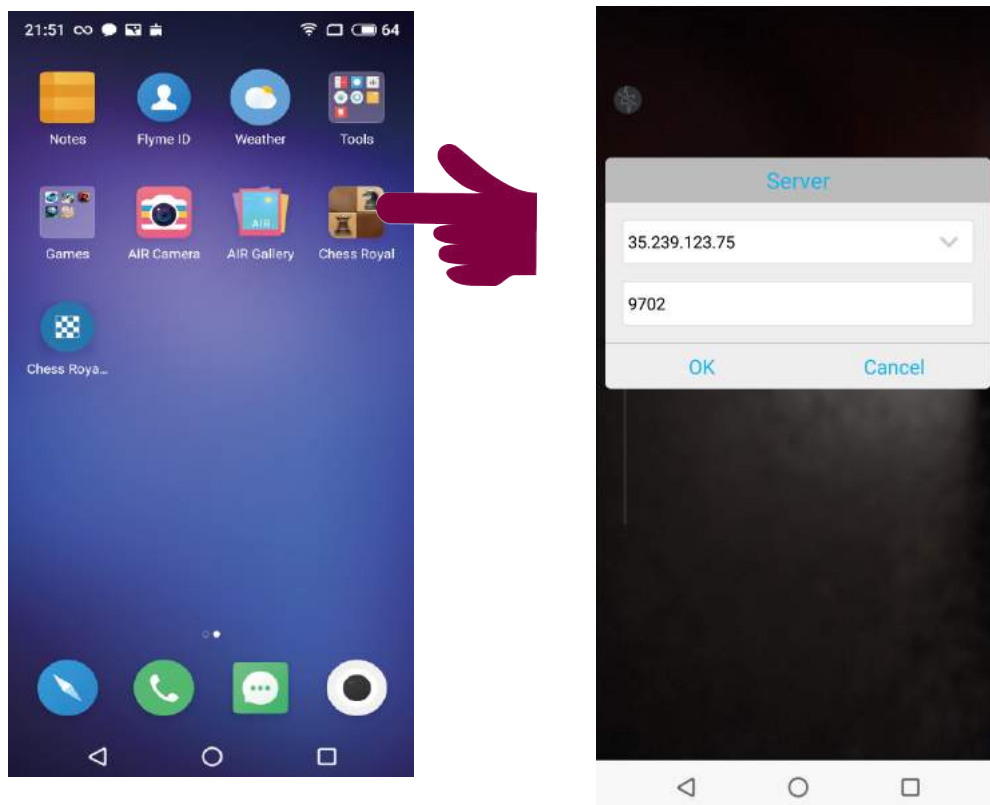
Download link:

[https://www.dropbox.com/sh/ylo46g76lk6ge0q/AAC6lHWARIZ\\_rzXMLehG-7cCa?dl=0](https://www.dropbox.com/sh/ylo46g76lk6ge0q/AAC6lHWARIZ_rzXMLehG-7cCa?dl=0)

2. Run the installed Chess Royal app, call out the server page from the setting to fill with the IP address information first as shown in the below picture then push the below Login bar to login

1st column: 35.239.123.75

2nd column: 9702



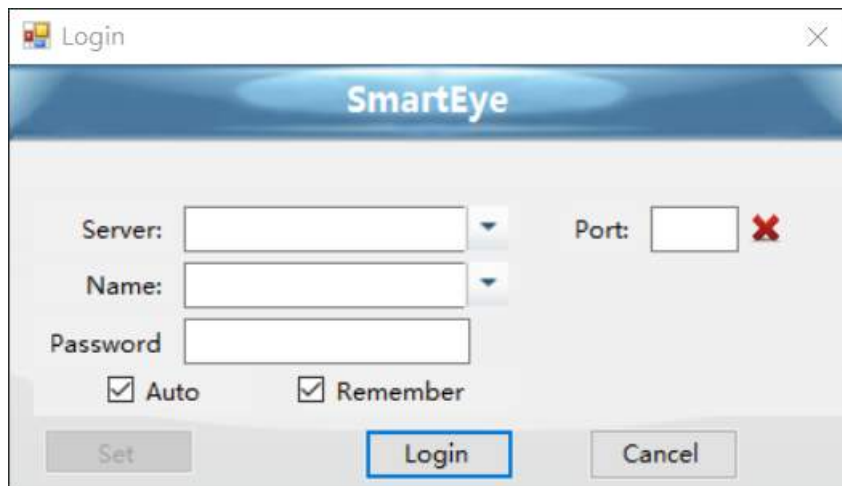
3. Run the SmartEye Monitor program file, which is one of them been installed to your PC, fill with the information shown in the picture below then push Login

Server : 35.239.123.75

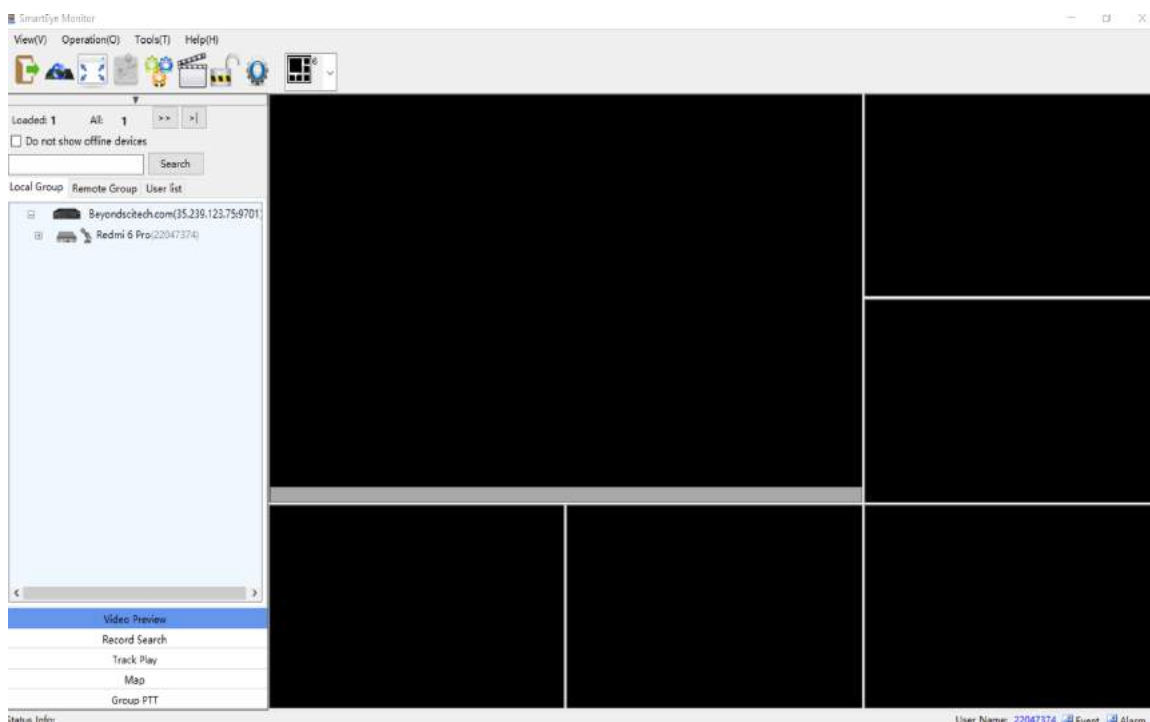
Name : 28280763

Password : 12345678

Port : 9701



4. After login, double click the scrolled video icon on the left as cursor located to see the live video, and may also check its GPS feature by click the below Map button



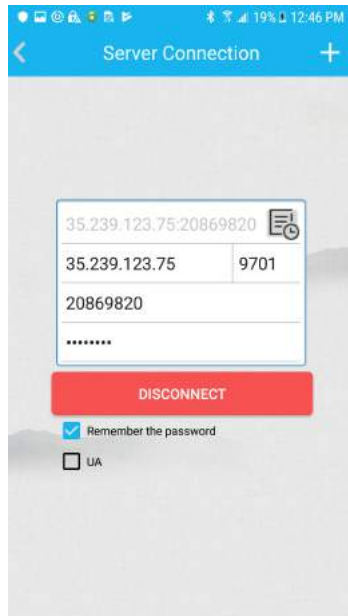
## 5. Phone/Tablet Viewer app

If you like to receive the streaming video by another phone or tablet device you need to install the MCU app from the below listed download link.

MCU app download link:

<https://www.dropbox.com/s/xnqfb3jg3lwpyim/mcu725.apk?dl=0>

6. After install it, call out this login page of this app, fill the same info as previous then push login bar



IP address : 35.239.123.75

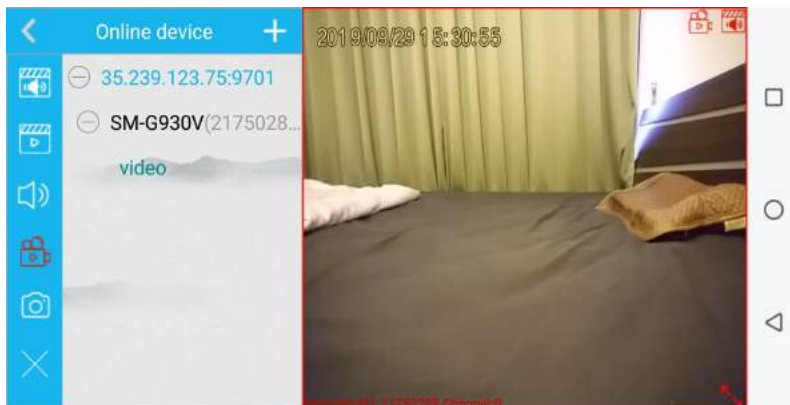
User Name : 28280763

Password : 12345678

Port : 9701

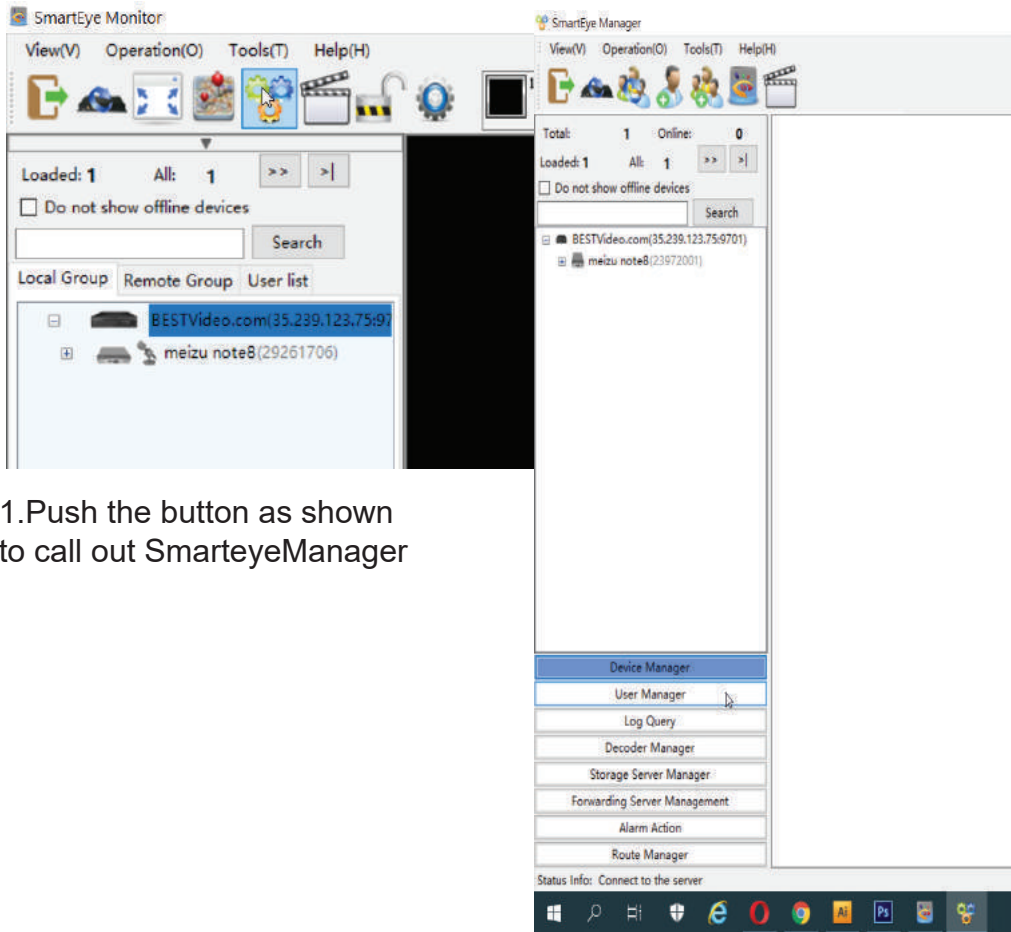
\*UA check must not be "ON"

Viewing the video and the map location



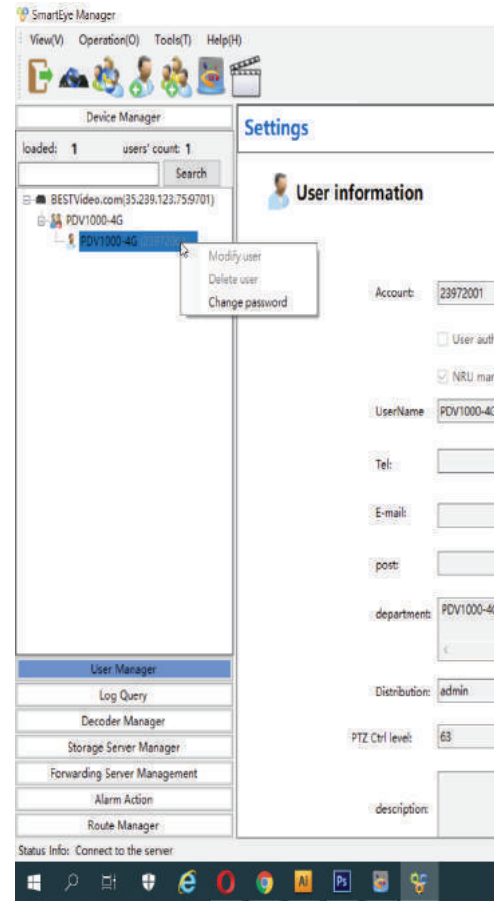
\*Attention: Can not install and operate the Chess Royal sending app and MCP receiving app in one same phone otherwise will cause fail operation.

# How to Change the login password to more secure your transferring video

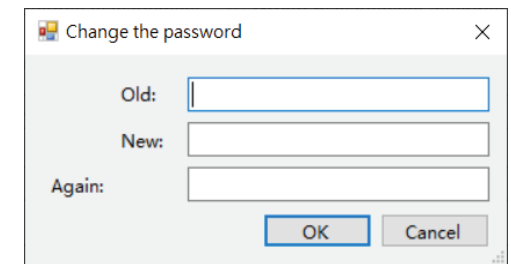


1. Push the button as shown to call out SmarteyeManager

2. Push the User Manager option below

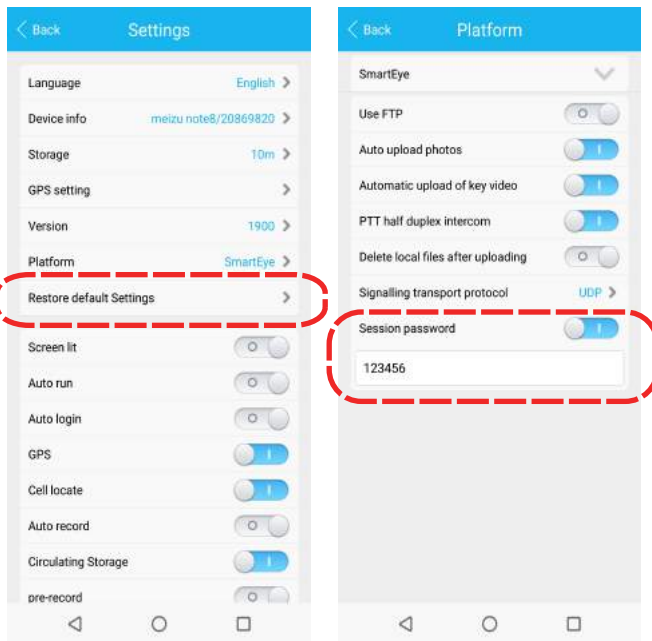


3. Right click the mouse on your device to call out the change password option

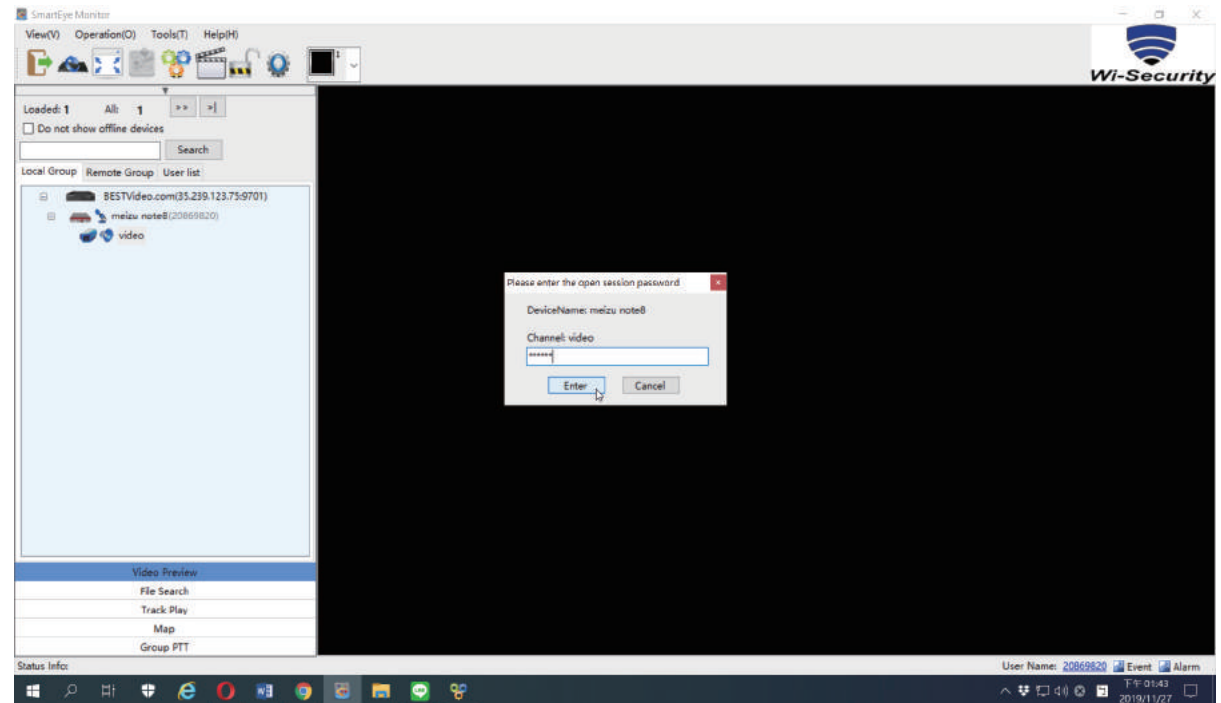


4. Change the password from default "12345678" to user's preferred.

## How to activate the source video lockup mode



Activate the mode by valid the column as shown above, set a free will password like 123456



On the receiving end need to enter 123456 to only be able to receiving the video