

PV-900 Firmware Update Operation Manual

NOTE:

- (1) Before starting any update, please connect main device with AC 5V adapter to avoid interruption during firmware update.

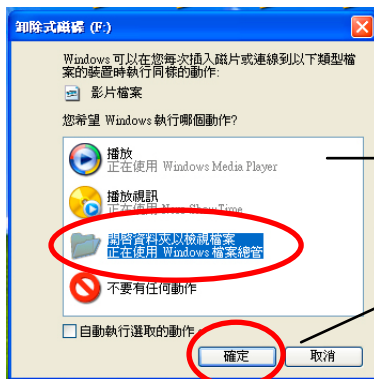


Connect main device with AC adapter during update process.

- (2) **DO NOT CHANGE THE FILE NAME AND FOLDER NAME.** This is very important because random rename will cause **non-reversible damage** to the device. The most severe case might cause the main device can no longer be used. Device is permanently shut off and will not be able to turn on again.
- (3) Steps followed by Step 4 are better suggested to **reformat** micro SD card before taking any further step. Browse to **My Computer**. Select **External Drive** and right-click to select **reformat**. Click **OK** on the pop-up window.
- (4) Checking firmware version should be done before any update is. To check firmware version, you can execute step 10 to confirm firmware version before update is proceed. You can also inquire through email or review website notice to check with proper firmware version. Firmware version can be read from accessing **Main Menu > Program Setting > Firmware Upgrade**.
If the firmware version read as F900LM100 v2.3, the device is required to upgrade to F900LM100 v2.4. When performing upgrade please be carefully with the underlining part. i.e. F900 conflicts with F901. If your version is F901LM100 v2.3, you are not to use F900LM100 v2.4 to upgrade. F901LM100 v2.3 is required to use F901LM100 v2.4 to upgrade. Please be very carefully with **identical prefix number** when performing update procedure. Different prefix number might cause **non-reversible damage** to the machine. The most severe case might cause the main device can no longer be used. Device is permanently shut off and will not be able to turn on again.

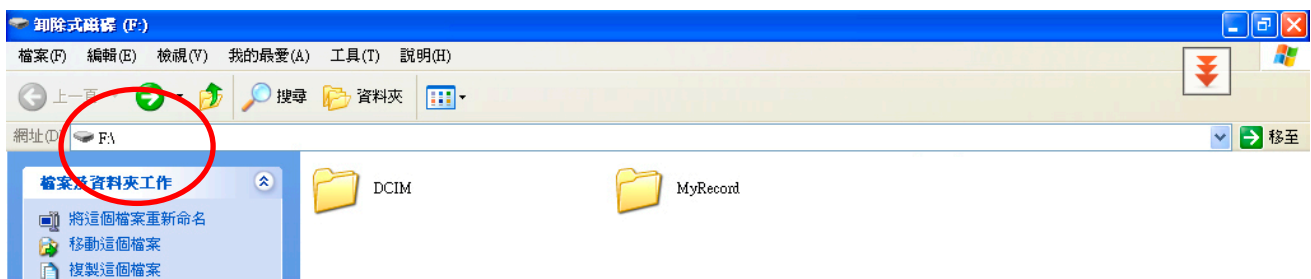
Step-by-step Guideline:

1. Take the memory card out from the card slot. Insert the micro SD card into SD card adapter. Insert SD card adapter into card reader.
2. Use card reader to connect to computer. A window pops up as followed:



Computer currently recognizes the card reader and asks permission to browse the folder. Select **Browse Folder**. Then click **OK**.

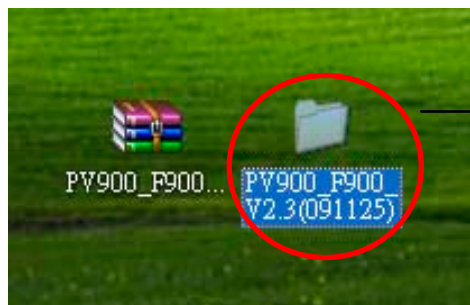
3. Then folder window pops up as followed. Please note the drive number. We will come back to use this drive in the further steps.



4. Download the update file to desktop as followed. Right-click and select **Decompress as**. Then there is a folder icon showed up in the same location.



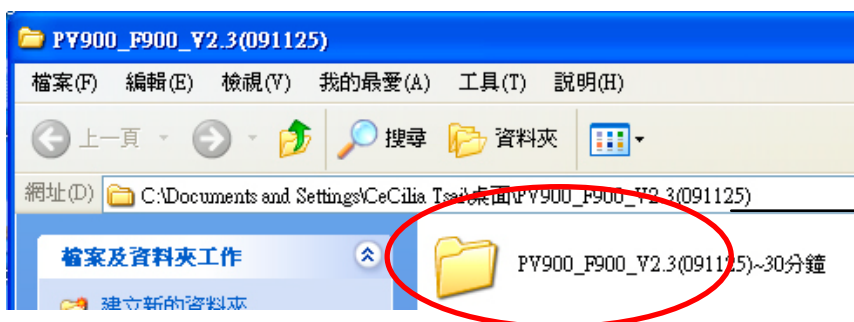
Original update file



After decompression

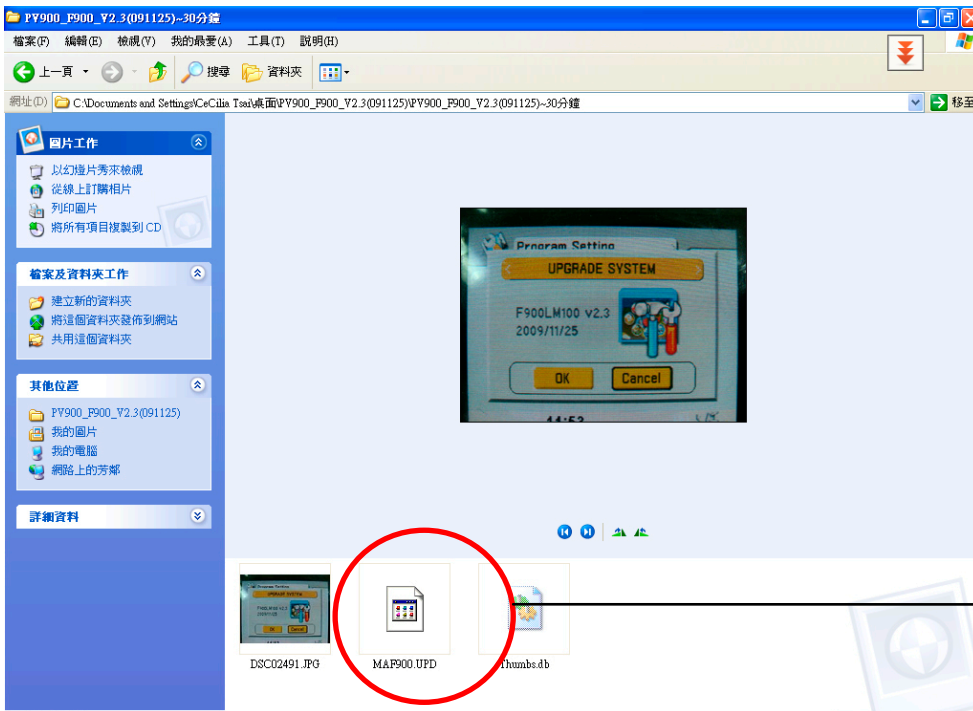
Folder after decompression!
Double click this folder to browse update file.

5. Double click the decompressed folder to browse to main update file. Select the main update file.



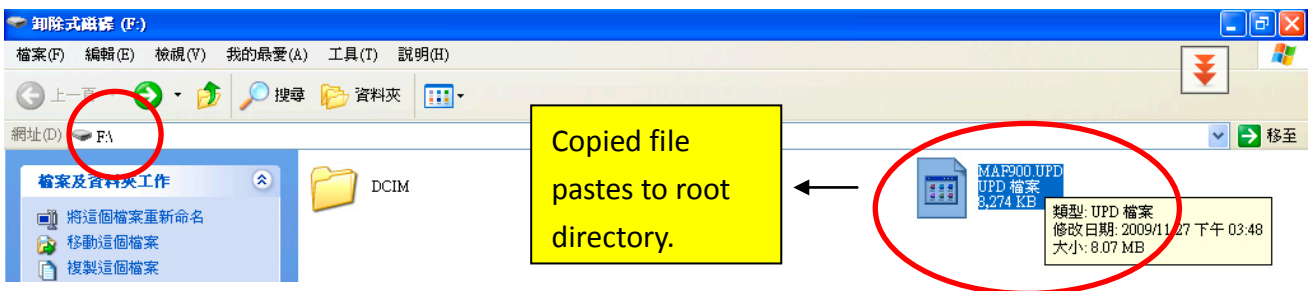
Double click this folder to browse to main update file. Another window pops up as followed.

6. Select the main update file. Right click to select **Copy**.

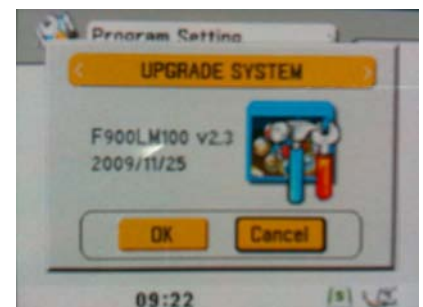
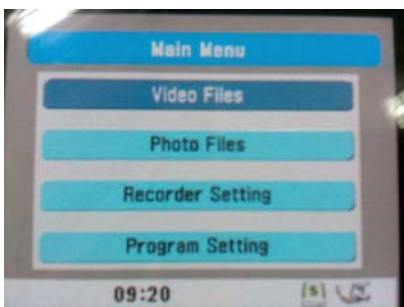


Please select this file. Right click to **copy**. **Paste** under root directory of memory card.

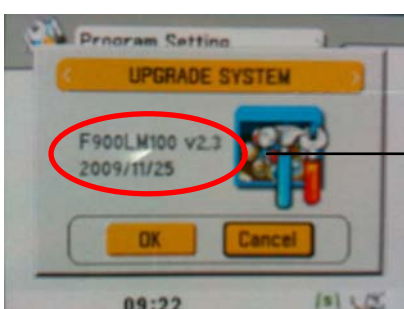
7. Browse to root directory of memory card. Right click to paste the copied file to this location, drive mentioned in step3.



8. Take out the micro SD card and insert the card back to main device.
9. Use the navigation button to select **Firmware Upgrade** option:
Main Menu > Program Setting > Firmware Upgrade.
 Then **Upgrade System** window pops up.

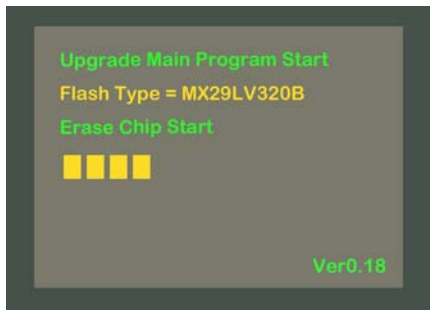


10. Check the firmware version and make sure you are using proper firmware version. Then click **OK**.



To check firmware version, you can execute step 10 to confirm firmware version before update is proceed. You can also inquire through email or review website notice to check with proper firmware version.

11. Screen display shows as followed. When update is completed, main device will automatically reboot.



12. After reboot, update is fully completed.